

## Working Environments & Practices

When installing ductwork ventilation, it is likely you will be asked to work in a number of different environments. They can be categorised into two broad categories: **new builds** and **re-works**.

New builds may comprise brand new building jobs such as offices, hospitals, and domestic dwellings.

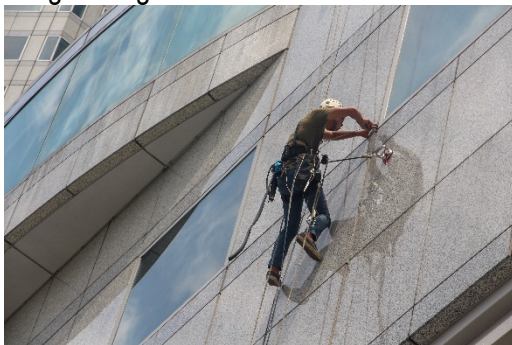
Re-works can be similar, but they will be existing buildings such as Hospitals, retail, manufacturing facilities, plant rooms (in office blocks) and domestic dwellings.

You may also be asked to work in naturally hazardous environments such as pharmaceutical facilities and refineries.



### PPE

There are advantages and disadvantages to wearing various items of PPE (Personal Protective Equipment). The obvious advantage of wearing something like a harness is that it will protect you when working at height. Similarly, RPE (Respiratory Protective Equipment) will protect you from inhaling dangerous gases and chemicals.



On the flip side, PPE can at the same time be restrictive and cause potential limitations. For example, PPE such as face coverings can make it difficult to be understood and convey messages whilst other equipment may make working less easy and therefore less efficient.

### Teamwork

One of the primary advantages of working in a team is that, as they say, many hands make light work. In other words, the more people working on a job, theoretically, the faster it can

be done. Perhaps a less obvious advantage is that there will naturally be more pairs of eyes looking out for hazards and so potentially fewer accidents.

Though conversely that could mean more people to leave hazards!



### The Environment

Whilst the environment when working indoors will generally be calm and stable, the same cannot be said for working outdoors, namely during the winter. The fall in temperature could make surfaces icy and therefore slippery and, if working at height, strong winds can also make conditions more dangerous.

### Equipment

The advance in technology has meant an improvement in the safety of equipment. Many drills are now battery powered, rather than electric, making it impossible to cut through power cables, whilst lifting machinery tends to be electric rather than diesel powered resulting in fewer noxious fumes.